

Trek

From the Cadet Contemporary 3 Collection

Product Details

Colourway, Composition & End Uses

Colourway	155 Duck Egg Blue
Basecloth	Vinyl
Composition	Coating PVC,PU,Acrylic,Basecloth Viscose,Polyester
End Uses	<ul style="list-style-type: none">• Healthcare Upholstery• Upholstery

Dimensions & Weight

Width (cm):	137.00 (approx.)
Weight (g/m ²):	760.00 (± 5%)
Height Repeat (cm):	8.00 (approx.)
Side Repeat (cm):	9.40 (approx.)

Technology

Product Technology

Anti-microbial
Stain Resistant Finish
Waterproof

Flammability Ratings

BS5852: 2006 Ignition Source 5
EN1021-1/2
IMO - FTP 2010 PART 8 (previously A.652 (16))
NFPA 260 (USA)

Durability

Martindale 350,000, Wyzenbeek 100,000

Wash & Care

Wash & Care Instructions

Vacuum or wipe clean routinely with a microfibre cloth lightly dampened with cold water only.

Wipe clean routinely with a microfibre cloth, lightly dampened with cold water only. Then dry with a clean absorbent cloth.

Most stains can be removed by wiping clean if tackled immediately.

Soak up spillages as soon as possible with an absorbent dry cloth to prevent staining. Clean with a microfibre cloth, lightly dampened with cold water.

Do not apply solvent based cleaners or other chemicals to the fabric.

Remove body fluids promptly (within 15 minutes) with cold water and then clean as above.

Note dyes and pigments from indigo jeans, ball point and felt tip pens may permanently stain.

Remove body fluids and extreme soiling immediately (within 15 minutes) with cold water. Apply your approved infection control protocol, a 5% sodium chlorite bleach solution, Haz-Tabs or Chlor-Clean. Remove product residues and then dry with a clean absorbent cloth.

Note steam cleaning disinfects but the application of heat may fix staining substances and may result in permanent marks.

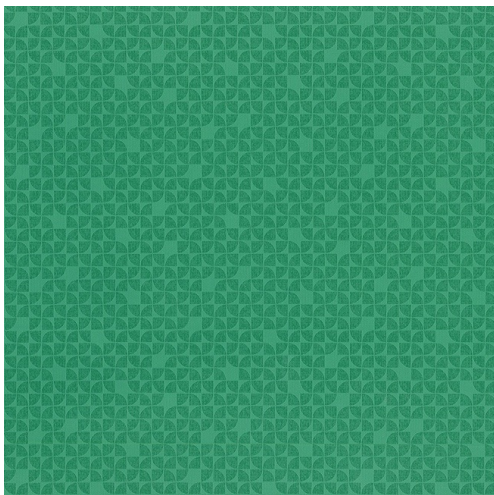
Do not use a felt tip, ball point pen or ink to mark as these can leave permanent stains.

Do not steam clean, dry clean, fully immerse in water or tumble dry.

Do not dry clean.

For general soiling, use a microfibre cloth taking care to avoid abrasive damage to surface and use tepid, soapy water (pH neutral). Rinse clean with water and dry with an absorbent cloth.

With any aspect of cleaning, it is essential that all residue is removed from the surface. Do not leave any liquids in situ.



Trek

From the Cadet Contemporary 3 Collection

Product Details

Colourway, Composition & End Uses

Colourway	219 Seafoam
Basecloth	Vinyl
Composition	Coating PVC,PU,Acrylic,Basecloth Viscose,Polyester
End Uses	<ul style="list-style-type: none">Healthcare UpholsteryUpholstery

Dimensions & Weight

Width (cm):	137.00 (approx.)
Weight (g/m ²):	760.00 (± 5%)
Height Repeat (cm):	8.00 (approx.)
Side Repeat (cm):	9.40 (approx.)

Technology

Product Technology

Anti-microbial

Stain Resistant Finish

Waterproof

Flammability Ratings

BS5852: 2006 Ignition Source 5

EN1021-1/2

IMO - FTP 2010 PART 8 (previously A.652 (16))

NFPA 260 (USA)

Durability

Martindale 350,000, Wyzenbeek 100,000

Wash & Care

Wash & Care Instructions

Vacuum or wipe clean routinely with a microfibre cloth lightly dampened with cold water only.

Wipe clean routinely with a microfibre cloth, lightly dampened with cold water only. Then dry with a clean absorbent cloth.

Most stains can be removed by wiping clean if tackled immediately.

Soak up spillages as soon as possible with an absorbent dry cloth to prevent staining. Clean with a microfibre cloth, lightly dampened with cold water.

Do not apply solvent based cleaners or other chemicals to the fabric.

Remove body fluids promptly (within 15 minutes) with cold water and then clean as above.

Note dyes and pigments from indigo jeans, ball point and felt tip pens may permanently stain.

Remove body fluids and extreme soiling immediately (within 15 minutes) with cold water. Apply your approved infection control protocol, a 5% sodium chlorite bleach solution, Haz-Tabs or Chlor-Clean. Remove product residues and then dry with a clean absorbent cloth.

Note steam cleaning disinfects but the application of heat may fix staining substances and may result in permanent marks.

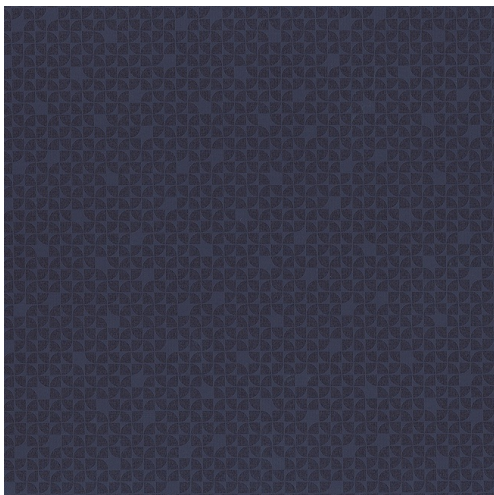
Do not use a felt tip, ball point pen or ink to mark as these can leave permanent stains.

Do not steam clean, dry clean, fully immerse in water or tumble dry.

Do not dry clean.

For general soiling, use a microfibre cloth taking care to avoid abrasive damage to surface and use tepid, soapy water (pH neutral). Rinse clean with water and dry with an absorbent cloth.

With any aspect of cleaning, it is essential that all residue is removed from the surface. Do not leave any liquids in situ.



Trek

From the Cadet Contemporary 3 Collection

Product Details

Colourway, Composition & End Uses

Colourway	105 Indigo
Basecloth	Vinyl
Composition	Coating PVC,PU,Acrylic,Basecloth Viscose,Polyester
End Uses	<ul style="list-style-type: none">Healthcare UpholsteryUpholstery

Dimensions & Weight

Width (cm):	137.00 (approx.)
Weight (g/m ²):	760.00 (± 5%)
Height Repeat (cm):	8.00 (approx.)
Side Repeat (cm):	9.40 (approx.)

Technology

Product Technology

Anti-microbial

Stain Resistant Finish

Waterproof

Flammability Ratings

BS5852: 2006 Ignition Source 5

EN1021-1/2

IMO - FTP 2010 PART 8 (previously A.652 (16))

NFPA 260 (USA)

Durability

Martindale 350,000, Wyzenbeek 100,000

Wash & Care

Wash & Care Instructions

Vacuum or wipe clean routinely with a microfibre cloth lightly dampened with cold water only.

Wipe clean routinely with a microfibre cloth, lightly dampened with cold water only. Then dry with a clean absorbent cloth.

Most stains can be removed by wiping clean if tackled immediately.

Soak up spillages as soon as possible with an absorbent dry cloth to prevent staining. Clean with a microfibre cloth, lightly dampened with cold water.

Do not apply solvent based cleaners or other chemicals to the fabric.

Remove body fluids promptly (within 15 minutes) with cold water and then clean as above.

Note dyes and pigments from indigo jeans, ball point and felt tip pens may permanently stain.

Remove body fluids and extreme soiling immediately (within 15 minutes) with cold water. Apply your approved infection control protocol, a 5% sodium chlorite bleach solution, Haz-Tabs or Chlor-Clean. Remove product residues and then dry with a clean absorbent cloth.

Note steam cleaning disinfects but the application of heat may fix staining substances and may result in permanent marks.

Do not use a felt tip, ball point pen or ink to mark as these can leave permanent stains.

Do not steam clean, dry clean, fully immerse in water or tumble dry.

Do not dry clean.

For general soiling, use a microfibre cloth taking care to avoid abrasive damage to surface and use tepid, soapy water (pH neutral). Rinse clean with water and dry with an absorbent cloth.

With any aspect of cleaning, it is essential that all residue is removed from the surface. Do not leave any liquids in situ.



Trek

From the Cadet Contemporary 3 Collection

Product Details

Colourway, Composition & End Uses

Colourway	624 Mulberry
Basecloth	Vinyl
Composition	Coating PVC,PU,Acrylic,Basecloth Viscose,Polyester
End Uses	<ul style="list-style-type: none">Healthcare UpholsteryUpholstery

Dimensions & Weight

Width (cm):	137.00 (approx.)
Weight (g/m ²):	760.00 (± 5%)
Height Repeat (cm):	8.00 (approx.)
Side Repeat (cm):	9.40 (approx.)

Technology

Product Technology

Anti-microbial

Stain Resistant Finish

Waterproof

Flammability Ratings

BS5852: 2006 Ignition Source 5

EN1021-1/2

IMO - FTP 2010 PART 8 (previously A.652 (16))

NFPA 260 (USA)

Durability

Martindale 350,000, Wyzenbeek 100,000

Wash & Care

Wash & Care Instructions

Vacuum or wipe clean routinely with a microfibre cloth lightly dampened with cold water only.

Wipe clean routinely with a microfibre cloth, lightly dampened with cold water only. Then dry with a clean absorbent cloth.

Most stains can be removed by wiping clean if tackled immediately.

Soak up spillages as soon as possible with an absorbent dry cloth to prevent staining. Clean with a microfibre cloth, lightly dampened with cold water.

Do not apply solvent based cleaners or other chemicals to the fabric.

Remove body fluids promptly (within 15 minutes) with cold water and then clean as above.

Note dyes and pigments from indigo jeans, ball point and felt tip pens may permanently stain.

Remove body fluids and extreme soiling immediately (within 15 minutes) with cold water. Apply your approved infection control protocol, a 5% sodium chlorite bleach solution, Haz-Tabs or Chlor-Clean. Remove product residues and then dry with a clean absorbent cloth.

Note steam cleaning disinfects but the application of heat may fix staining substances and may result in permanent marks.

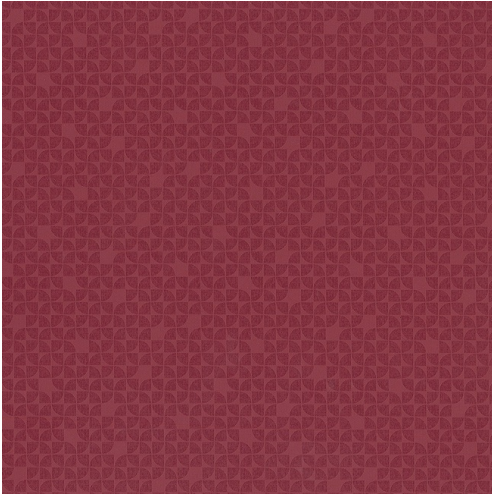
Do not use a felt tip, ball point pen or ink to mark as these can leave permanent stains.

Do not steam clean, dry clean, fully immerse in water or tumble dry.

Do not dry clean.

For general soiling, use a microfibre cloth taking care to avoid abrasive damage to surface and use tepid, soapy water (pH neutral). Rinse clean with water and dry with an absorbent cloth.

With any aspect of cleaning, it is essential that all residue is removed from the surface. Do not leave any liquids in situ.



Trek

From the Cadet Contemporary 3 Collection

Product Details

Colourway, Composition & End Uses

Colourway	609 Rose
Basecloth	Vinyl
Composition	Coating PVC,PU,Acrylic,Basecloth Viscose,Polyester
End Uses	<ul style="list-style-type: none">Healthcare UpholsteryUpholstery

Dimensions & Weight

Width (cm):	137.00 (approx.)
Weight (g/m ²):	760.00 (± 5%)
Height Repeat (cm):	8.00 (approx.)
Side Repeat (cm):	9.40 (approx.)

Technology

Product Technology

Anti-microbial
Stain Resistant Finish
Waterproof

Flammability Ratings

BS5852: 2006 Ignition Source 5
EN1021-1/2
IMO - FTP 2010 PART 8 (previously A.652 (16))
NFPA 260 (USA)

Durability

Martindale 350,000, Wyzenbeek 100,000

Wash & Care

Wash & Care Instructions

Vacuum or wipe clean routinely with a microfibre cloth lightly dampened with cold water only.

Wipe clean routinely with a microfibre cloth, lightly dampened with cold water only. Then dry with a clean absorbent cloth.

Most stains can be removed by wiping clean if tackled immediately.

Soak up spillages as soon as possible with an absorbent dry cloth to prevent staining. Clean with a microfibre cloth, lightly dampened with cold water.

Do not apply solvent based cleaners or other chemicals to the fabric.

Remove body fluids promptly (within 15 minutes) with cold water and then clean as above.

Note dyes and pigments from indigo jeans, ball point and felt tip pens may permanently stain.

Remove body fluids and extreme soiling immediately (within 15 minutes) with cold water. Apply your approved infection control protocol, a 5% sodium chlorite bleach solution, Haz-Tabs or Chlor-Clean. Remove product residues and then dry with a clean absorbent cloth.

Note steam cleaning disinfects but the application of heat may fix staining substances and may result in permanent marks.

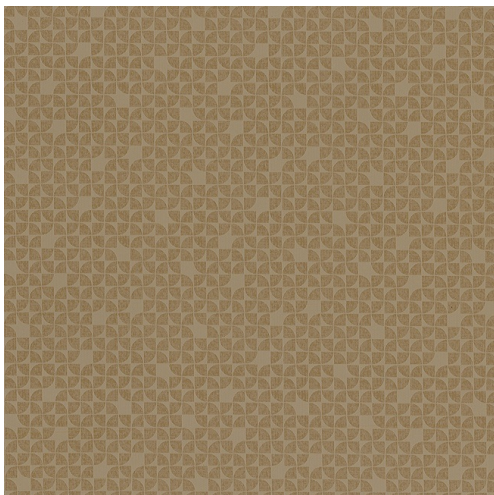
Do not use a felt tip, ball point pen or ink to mark as these can leave permanent stains.

Do not steam clean, dry clean, fully immerse in water or tumble dry.

Do not dry clean.

For general soiling, use a microfibre cloth taking care to avoid abrasive damage to surface and use tepid, soapy water (pH neutral). Rinse clean with water and dry with an absorbent cloth.

With any aspect of cleaning, it is essential that all residue is removed from the surface. Do not leave any liquids in situ.



Trek

From the Cadet Contemporary 3 Collection

Product Details

Colourway, Composition & End Uses

Colourway	823 Chablis
Basecloth	Vinyl
Composition	Coating PVC,PU,Acrylic,Basecloth Viscose,Polyester
End Uses	<ul style="list-style-type: none">Healthcare UpholsteryUpholstery

Dimensions & Weight

Width (cm):	137.00 (approx.)
Weight (g/m ²):	760.00 (± 5%)
Height Repeat (cm):	8.00 (approx.)
Side Repeat (cm):	9.40 (approx.)

Technology

Product Technology

Anti-microbial

Stain Resistant Finish

Waterproof

Flammability Ratings

BS5852: 2006 Ignition Source 5

EN1021-1/2

IMO - FTP 2010 PART 8 (previously A.652 (16))

NFPA 260 (USA)

Durability

Martindale 350,000, Wyzenbeek 100,000

Wash & Care

Wash & Care Instructions

Vacuum or wipe clean routinely with a microfibre cloth lightly dampened with cold water only.

Wipe clean routinely with a microfibre cloth, lightly dampened with cold water only. Then dry with a clean absorbent cloth.

Most stains can be removed by wiping clean if tackled immediately.

Soak up spillages as soon as possible with an absorbent dry cloth to prevent staining. Clean with a microfibre cloth, lightly dampened with cold water.

Do not apply solvent based cleaners or other chemicals to the fabric.

Remove body fluids promptly (within 15 minutes) with cold water and then clean as above.

Note dyes and pigments from indigo jeans, ball point and felt tip pens may permanently stain.

Remove body fluids and extreme soiling immediately (within 15 minutes) with cold water. Apply your approved infection control protocol, a 5% sodium chlorite bleach solution, Haz-Tabs or Chlor-Clean. Remove product residues and then dry with a clean absorbent cloth.

Note steam cleaning disinfects but the application of heat may fix staining substances and may result in permanent marks.

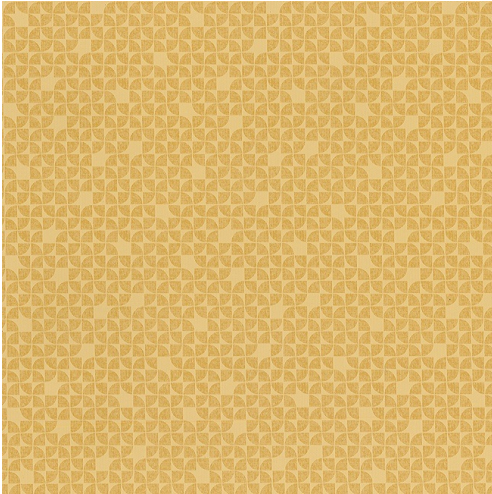
Do not use a felt tip, ball point pen or ink to mark as these can leave permanent stains.

Do not steam clean, dry clean, fully immerse in water or tumble dry.

Do not dry clean.

For general soiling, use a microfibre cloth taking care to avoid abrasive damage to surface and use tepid, soapy water (pH neutral). Rinse clean with water and dry with an absorbent cloth.

With any aspect of cleaning, it is essential that all residue is removed from the surface. Do not leave any liquids in situ.



Trek

From the Cadet Contemporary 3 Collection

Product Details

Colourway, Composition & End Uses

Colourway	321 Wheat
Basecloth	Vinyl
Composition	Coating PVC,PU,Acrylic,Basecloth Viscose,Polyester
End Uses	<ul style="list-style-type: none">Healthcare UpholsteryUpholstery

Dimensions & Weight

Width (cm):	137.00 (approx.)
Weight (g/m ²):	760.00 (± 5%)
Height Repeat (cm):	8.00 (approx.)
Side Repeat (cm):	9.40 (approx.)

Technology

Product Technology

Anti-microbial
Stain Resistant Finish
Waterproof

Flammability Ratings

BS5852: 2006 Ignition Source 5
EN1021-1/2
IMO - FTP 2010 PART 8 (previously A.652 (16))
NFPA 260 (USA)

Durability

Martindale 350,000, Wyzenbeek 100,000

Wash & Care

Wash & Care Instructions

Vacuum or wipe clean routinely with a microfibre cloth lightly dampened with cold water only.

Wipe clean routinely with a microfibre cloth, lightly dampened with cold water only. Then dry with a clean absorbent cloth.

Most stains can be removed by wiping clean if tackled immediately.

Soak up spillages as soon as possible with an absorbent dry cloth to prevent staining. Clean with a microfibre cloth, lightly dampened with cold water.

Do not apply solvent based cleaners or other chemicals to the fabric.

Remove body fluids promptly (within 15 minutes) with cold water and then clean as above.

Note dyes and pigments from indigo jeans, ball point and felt tip pens may permanently stain.

Remove body fluids and extreme soiling immediately (within 15 minutes) with cold water. Apply your approved infection control protocol, a 5% sodium chlorite bleach solution, Haz-Tabs or Chlor-Clean. Remove product residues and then dry with a clean absorbent cloth.

Note steam cleaning disinfects but the application of heat may fix staining substances and may result in permanent marks.

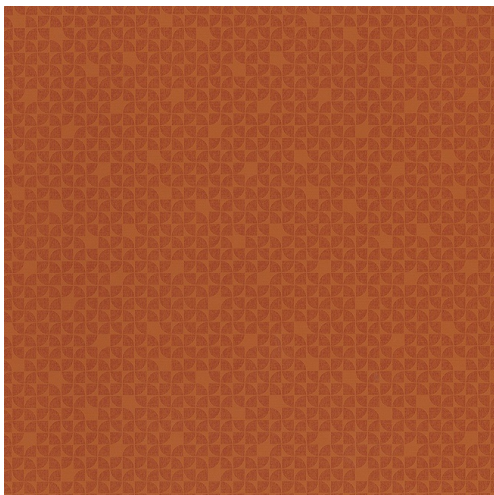
Do not use a felt tip, ball point pen or ink to mark as these can leave permanent stains.

Do not steam clean, dry clean, fully immerse in water or tumble dry.

Do not dry clean.

For general soiling, use a microfibre cloth taking care to avoid abrasive damage to surface and use tepid, soapy water (pH neutral). Rinse clean with water and dry with an absorbent cloth.

With any aspect of cleaning, it is essential that all residue is removed from the surface. Do not leave any liquids in situ.



Trek

From the Cadet Contemporary 3 Collection

Product Details

Colourway, Composition & End Uses

Colourway	401 Amber
Basecloth	Vinyl
Composition	Coating PVC,PU,Acrylic,Basecloth Viscose,Polyester
End Uses	<ul style="list-style-type: none">Healthcare UpholsteryUpholstery

Dimensions & Weight

Width (cm):	137.00 (approx.)
Weight (g/m ²):	760.00 (± 5%)
Height Repeat (cm):	8.00 (approx.)
Side Repeat (cm):	9.40 (approx.)

Technology

Product Technology

Anti-microbial

Stain Resistant Finish

Waterproof

Flammability Ratings

BS5852: 2006 Ignition Source 5

EN1021-1/2

IMO - FTP 2010 PART 8 (previously A.652 (16))

NFPA 260 (USA)

Durability

Martindale 350,000, Wyzenbeek 100,000

Wash & Care

Wash & Care Instructions

Vacuum or wipe clean routinely with a microfibre cloth lightly dampened with cold water only.

Wipe clean routinely with a microfibre cloth, lightly dampened with cold water only. Then dry with a clean absorbent cloth.

Most stains can be removed by wiping clean if tackled immediately.

Soak up spillages as soon as possible with an absorbent dry cloth to prevent staining. Clean with a microfibre cloth, lightly dampened with cold water.

Do not apply solvent based cleaners or other chemicals to the fabric.

Remove body fluids promptly (within 15 minutes) with cold water and then clean as above.

Note dyes and pigments from indigo jeans, ball point and felt tip pens may permanently stain.

Remove body fluids and extreme soiling immediately (within 15 minutes) with cold water. Apply your approved infection control protocol, a 5% sodium chlorite bleach solution, Haz-Tabs or Chlor-Clean. Remove product residues and then dry with a clean absorbent cloth.

Note steam cleaning disinfects but the application of heat may fix staining substances and may result in permanent marks.

Do not use a felt tip, ball point pen or ink to mark as these can leave permanent stains.

Do not steam clean, dry clean, fully immerse in water or tumble dry.

Do not dry clean.

For general soiling, use a microfibre cloth taking care to avoid abrasive damage to surface and use tepid, soapy water (pH neutral). Rinse clean with water and dry with an absorbent cloth.

With any aspect of cleaning, it is essential that all residue is removed from the surface. Do not leave any liquids in situ.
